

Hawai'i's Highly Qualified Teacher Guidelines



No Child Left Behind Act of 2001

Requires that all teachers in the following core academic subject areas meet requirements as “Highly Qualified.”

Elementary Education	History
English/Language Arts	Mathematics
Economics	Science
Geography	Art
Civics	Foreign Languages
Special Education *	

*SPED teachers must be licensed in SPED & HQ in every core area taught

Highly Qualified Elementary Teachers

with fewer than two full years of teaching must:

- 1) Have at least a Bachelor's Degree; **AND**
- 2) hold a valid Hawai'i teaching License; **AND**
- 3a) have passed the PRAXIS II tests for the elementary level **OR**
- 3b) earned 30 semester credits in areas of the elementary curriculum (English/language arts (including reading and writing), mathematics, science, civics/government, economics, geography, history and fine arts. Of these, at least three credits must be in English/language arts, three in mathematics, three in science and three in any combination of civics/government, economics, geography or history, **AND**
- 4) be properly assigned in a K-6 self-contained classroom in an elementary school.

Highly Qualified Elementary Teachers

with two or more full years of teaching must:

- 1) Have at least a Bachelor's Degree; **AND**
- 2) hold a valid Hawai'i teaching License; **AND**
- 3a) have passed the PRAXIS II tests for the level **OR**
- 3b) earned 30 semester credits in areas of the elementary curriculum (English/language arts (including reading and writing), mathematics, science, civics/government, economics, geography, history and fine arts. Of these, at least three credits must be in English/language arts, three in mathematics, three in science and three in any combination of civics/government, economics, geography or history, **OR**
- 3c) have National Board Certification in Early Childhood Generalist (ages 3 to 8) **OR**
- 3d) satisfy the HOUSS requirements set forth below;
AND
- 4) be properly assigned in a K-6 self-contained classroom in an elementary school

Which Special Education teachers must earn the HQ designation?

Special educators who provide direct instruction in core academic subjects must earn the federal definition for “highly qualified teacher.” Direct instruction, by federal definition, is:

- Planning curriculum, delivering instruction and evaluating the performance of the student in any core academic area;
- Providing direct instruction in a core academic subject in a resource room setting;
- Providing direct instruction in a core academic subject in any setting;
- Teaching elective credits in core academic areas; and
- Teaching life-skills to students

Highly qualified elementary special education teachers (gradeK-6) new to the profession must:

- 1) Have at least a Bachelor's degree; **and**
- 2) hold a valid Hawai'i teaching license in special education; **and**
- 3a) have passed the PRAXIS II tests for special education **OR** for the elementary level **OR** PRAXIS II test for PK-3 Early Childhood **OR**
- 3b) earned 30 semester credits in areas of the elementary curriculum (English/language arts (including reading and writing) mathematics, science, civics/government, economics, geography, history and fine arts.) Of these, at least three credits must be in English/language arts, three must be in mathematics, three must be in science and three must be in any combination of civics/government, economics, geography or history; **and**
- 4) teach special education students at the appropriate grade level.

Highly qualified elementary special education teachers (grade K-6) not new to the profession must:

- 1) Have at least a Bachelor's degree; **and**
- 2) hold a valid Hawai'i teaching license in special education; **and**
- 3a) have passed the PRAXIS II tests for education **OR** for the elementary level **OR** PRAXIS II test PK-3 Early Childhood **OR**
- 3b) earned 30 semester credits in areas of the elementary curriculum (English/language arts (including reading and writing) mathematics, science, civics/government, economics, geography, history and fine arts.) Of these, at least three credits must be in English/language arts, three must be in mathematics, three must be in science and three must be in any combination of civics/government, economics, geography or history;

AND...

Highly qualified elementary special education teachers (gradeK-6) not new to the profession must:
(...continued)

- 3c) hold Early Childhood Generalist (ages 3-8) or Middle Childhood Generalist (ages 7-12) National Board for Professional Teaching Standards credential in subject matter area, **OR**
- 3d) satisfy the HOU SSE requirements set forth below;
AND
- 4) teach special education students at the appropriate grade level.

Requirements to obtain Hawai'i State licensure

State teaching licensure is governed by the Hawai'i Teacher Standards Board (HTSB). State law requires that every public school teacher in Hawai'i hold a valid teaching license. To be licensed to teach in Hawai'i, one must:

- 1) Satisfactorily complete a teacher education program approved under Policy, Procedures, and Standards of the HTSB; **AND**
- 2a) attain passing scores on applicable PRAXIS exams; **OR**
- 2b) be National Board Certified (except middle school generalist for middle school teachers); **AND**
- 3) meet professional fitness criteria; **AND**
- 4) pay license fees.



PRAXIS Examinations

Passing the following PRAXIS examinations at the score determined by HTSB is required as a condition of full licensure.

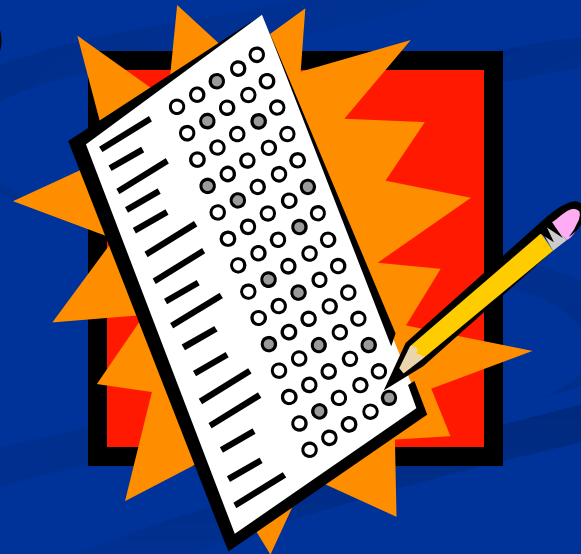
NOTE:

Out-of-state applicants with a valid, un-revoked, standard professional license may obtain verification of tests taken in that state for each PRAXIS category.

PRAXIS Examinations

- PRAXIS I: Pre-Professional Skills Tests (PPST).
 - All licensure applicants must take the PPST in
 - Reading (Test 0710 or 5710) and
 - Writing (Test 0720 or 5720) and
 - Mathematics (Test 0730 or 5730)

AND.....



PRAXIS Examinations

- Principles of Learning and Teaching (PLT) PK-3, K-6, 5-9, or 7-12
 - All licensure applicants must take the PLT for the level of their teacher education program:
 - Early Childhood PK-3 (Test 0521) or
 - Grades K-6 (Test 0522) or
 - Grades 5-9 (Test 0523) or
 - Grades 7-12 (Test 0524)

NOTE: Applicants with only a middle level state approved program are required to complete the 5-9 version; early childhood applicants must take PK-3.

***AND*.....**

PRAXIS Examinations

- PRAXIS II: Content Area Tests.
 - Early Childhood (PK-3) and Elementary (K-6) applicants are required to take the tests listed for their area of preparation.
 - Middle level applicants must select content tests aligned with student teaching.
 - Secondary/Specialist applicants are required to take the subject area assessments) for the content area of their State Approved Teacher Education Program.

Hawai'i High Objective State Standard of Evaluation (HOUSSE)

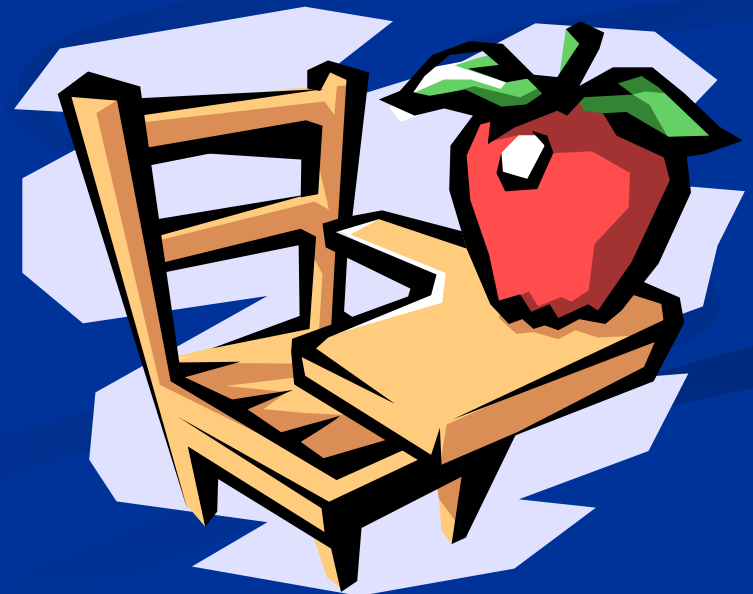
HOUSSE

is a point based system giving credit for experience, coursework, professional development, activities and service related to the content area:

- Earn up to 100 points through
 - Experience in content area – nine points per year – with a maximum 45 points;
 - College coursework, DOE in-service & workshops in the content area;
 - Professional activities in core content area;
 - Awards, presentations, publications – with a maximum 30 points.

Emergency Hire Teachers (Teachers without a valid Hawai'i State Teaching License)

Emergency hire teachers cannot be designated as “Highly Qualified” because full state licensure and certification are waived on an “emergency” temporary basis.



Charter schools requirements for HQT

- All teachers must meet the licensure requirements established in the State's public charter school law, which means they must meet the same requirements in the same manner as teachers in all other public schools.

Therefore, in Hawai'i, charter school teachers must hold at least a bachelor's degree, be licensed to teach in the State of Hawai'i, must demonstrate competence in the core academic areas taught and must be properly assigned.

Websites

HQT & Frequently Asked Questions

- <http://doe.k12.hi.us/teacherquality>

For additional questions

- HQT@notes.k12.hi.us



CSAO Federal Programs Team

Corinna Cornejo: 808-586-3781

ccornejo@hcsao.org

DeAnn Keo: 808-586-3799

deann@hcsao.org

MAHALO Ā PAU

